

WORTH STREET

G

GEORGE BOYLE ARCHITECT
100 South Street, New York, NY 10038
Tel: 212.224.9900
www.georgeboyle.com

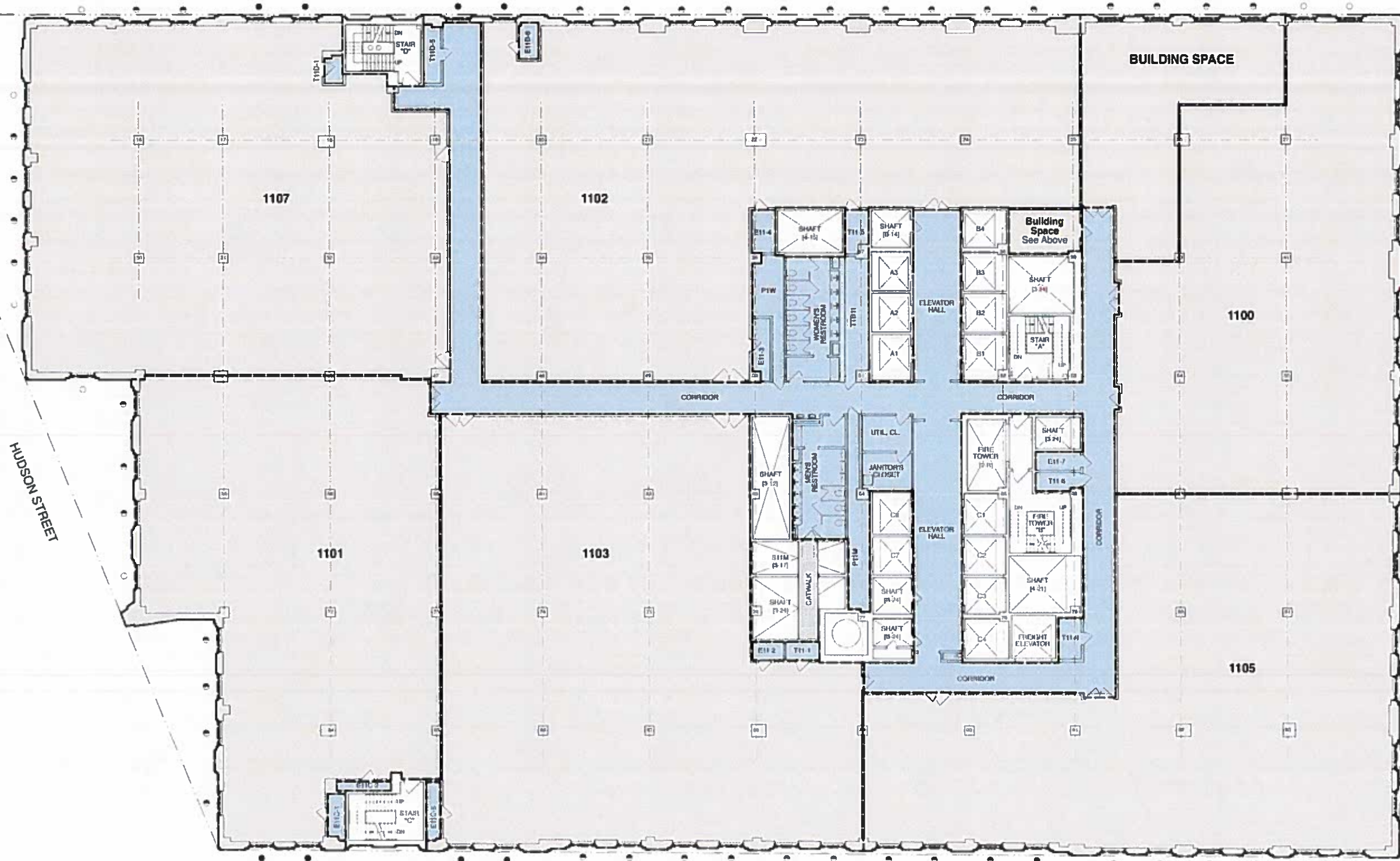
NOTES:
THIS DRAWING IS BASED ON SITE SURVEY MADE APRIL, 2009 BY GEORGE BOYLE ARCHITECT. PREVIOUS PLANS BY VOORHEES, WALKER AND HOWLAND ASSOCIATES. THESE DRAWINGS MAY NOT CORRELATE IN ALL ASPECTS WITH ACTUAL CONDITIONS. NOTHING IN THE TRANSFER OF THIS DOCUMENT SHOULD BE CONSTRUED TO PROVIDE ANY RIGHT TO RELY ON THE INFORMATION PROVIDED OR THAT THE USE OF THIS DOCUMENT IMPLIES THE REVIEW AND APPROVAL OF GEORGE BOYLE ARCHITECT. NO REPRESENTATION OR WARRANTY IS MADE AS TO THE ACCURACY OF THESE DRAWINGS. ALL CONDITIONS MUST BE FIELD-MEASURED AND VERIFIED.

AREAS CALCULATED PER REAL ESTATE BOARD OF NEW YORK (REBNY) RECOMMENDED METHOD OF FLOOR MEASUREMENT FOR OFFICE BUILDINGS EFFECTIVE JANUARY 1, 1987; REVISED IN DECEMBER, 2003.

- LEGEND:**
LOUVERS PERMITTED PER LANDMARKS MASTER PLAN OF JANUARY 2008
- FULL LOUVER PERMITTED
 - HALF LOUVER PERMITTED (UPPER SASH)
 - NO LOUVER PERMITTED
 - BUILDING RELATED AREAS
 - NET USABLE TENANT SPACES

WEST BROADWAY

60 HUDSON
60 HUDSON STREET (E11)
60 HUDSON STREET, NEW YORK, NY



THOMAS STREET

11TH FLOOR PLAN
3/4" = 1'-0"



11TH FLOOR PLAN

3/4" = 1'-0"

DATE: 01/11/11

AB.11